

THE

WWW.WHITEKNIGHTS.WOKINGHAM.SCH.UK

WHITEKNIGHTS ARROW



Date 11th July 2025

No.: Issue #37

WHAT'S ON THE FINAL WEEK OF TERM

MONDAY	TUESDAY	WEDNESDAY	THURSDAY	FRIDAY
14 JULY	15 JULY	16 JULY	17 JULY	18 JULY
Year 6 Dress Rehearsal to Rest of School 09:00	Year 6 Performance to Parents 18:30	Year 6 Performance to Parents 09:00	School Reports to go Home	LAST DAY OF TERM—FINISH PROMPTLY AT 13:00 NO EXTENDED CARE OR AFTER SCHOOL CLUBS RUNNING
		Final Girls Football Session (Y3-Y6)	Moving Up Morning	
		Year 3 Egyptian Day	Year 6 Leavers Assembly followed by Fun Afternoon (finishes at 15:20)	
		Year 2 Royal Afternoon	Year 6 Leavers Banquet 18:30—21:30	
REMINDER—NO KITCHEN FACILITIES DUE TO REFURBISHMENT—IF YOU HAVE NOT PRE-ORDERED A LUNCH, THEN A PACKED LUNCH WILL NEED TO BE PROVIDED				

+ONLINE SCHOOL CALENDAR

KEY:

WHOLE SCHOOL

YEAR GROUP SPECIFIC

OTHER

SCHOOL ATTENDANCE

OVERALL TOTAL: 96.5%

REC—Crystal	95.0%	Y4—Amethyst	98.7%
REC—Pearl	97.3%	Y4—Jasper	97.0%
Y1—Amber	100%	Y5—Emerald	98.0%
Y1—Jade	99.0%	Y5—Onyx	XX%
Y2—Opal	95.0%	Y5—Sapphire	98.3%
Y2—Topaz	100%	Y6—Obsidian	XX%
Y3—Diamond	99.7%	Y6—Ruby	92.3%
Y3—Garnet	96.0%	Y6—Tiger's Eye	92.6%

ATTENDANCE MATTERS!

Every Child | In School | On Time | Every Day



WHOLE-SCHOOL NOTICES

NEW MENU AND PRICE CHANGE SEPTEMBER 2025

Please note that for the new academic year 2025 -2026, the meal price will increase to £2.74

Please click on the menu to view a larger version.

What's on the menu?

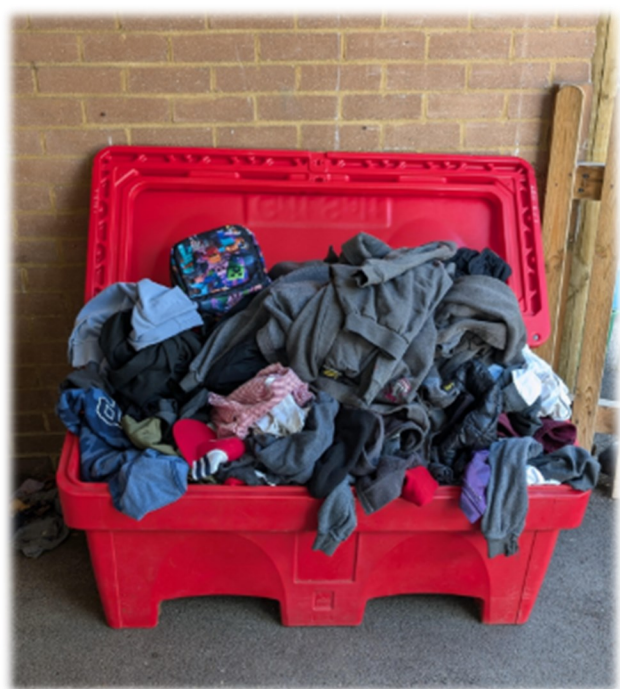
HARRISON
food with thought

	MONDAY	TUESDAY	WEDNESDAY	THURSDAY	FRIDAY
WEEK ONE	<p>Chickpea & Lentil Poshers with Potato Wedges</p> <p>Indian Style Vegetable & Chickpea Curry</p> <p>Carrots & Peas</p> <p>Apple Crumble & Custard</p>	<p>Piri Piri Chicken with Sweetcorn Rice & Lemon Dressing</p> <p>Sweet Potato & Red Pepper Pudding with Sweetcorn Rice & Lemon Dressing</p> <p>Savory Cabbage / Green Beans</p> <p>Chocolate Shortbread with Orange Wedges</p>	<p>Chicken Sausages with Herby New Potatoes & Gravy</p> <p>Vegetable Sausages with Herby New Potatoes & Gravy</p> <p>Glazed Carrots / Courgettes with Roast Potatoes</p> <p>Berry Spelt Sponge Cake & Custard</p>	<p>Beef Penne Pasta with Cheese Tomato & Herby Penne Pasta with Cheesy Topping</p> <p>Broccoli / Herb Roasted Butternut Squash</p> <p>Strawberry Jelly with Fresh Fruit Slices</p>	<p>Buttered Fish & Chips with Tomato Sauce</p> <p>Cornish Style Vegetable Pasty with Chips & Tomato Sauce</p> <p>Peas / Baked Beans</p> <p>Lemon Sponge Cake with Custard</p>
WEEK TWO	<p>Italian Style Tomato & Basil Pasta with Cheese</p> <p>Sweet Potato & Chickpea Korma with Rice</p> <p>Glazed Carrots / Green Beans</p> <p>Marinated Sponge Cake & Custard</p>	<p>Barbecue Chicken with Sweetcorn Rice</p> <p>Macaroni Cheese with Garlic Bread</p> <p>Broccoli / Sweetcorn</p> <p>Wholemeal Lemon Shortbread with Fruit Wedges</p>	<p>Roast Turkey with Sage & Onion Stuffing & Roast Potatoes & Gravy</p> <p>Quorn Roast with Sage & Onion Stuffing, Roast Potatoes & Gravy</p> <p>Spiced Cauliflower / Peas</p> <p>Carrot & Orange Cake with Custard</p>	<p>Cottage Pie with Thyme Gravy</p> <p>Wholemeal Cheddar Cheese & Sausage Quiche with Herby New Potatoes</p> <p>Vegetable Medley</p> <p>Ice Cream with Fresh Fruit Wedges</p>	<p>Buttered Fish & Chips with Tomato Sauce</p> <p>Chili Bean Filla with Chips & Tomato Sauce</p> <p>Peas / Baked Beans</p> <p>Apple Fridgepack with Custard</p>
WEEK THREE	<p>Margherita Pizza with Colcannon & Potato Wedges</p> <p>Oriental Style Stir Fried Vegetables with Rice</p> <p>Herb Roasted Butternut Squash / Peas</p> <p>Pumpkin & Apple Sponge Cake with Custard</p>	<p>Mild Chili Beef with Soft Taco, Rice & Salsa</p> <p>Bean & Vegetable Chili with Soft Taco, Rice & Salsa</p> <p>Broccoli / Carrots</p> <p>Oatmeal Cookie with Fruit Wedges</p>	<p>Roast Gammon with Roast New Potatoes, Yorkshire Pudding & Gravy</p> <p>Vegetable Loaf with Roast New Potatoes & Yorkshire Pudding & Gravy</p> <p>Garlic Green Beans / Sweetcorn</p> <p>Chocolate Sponge Cake with Chocolate Sauce</p>	<p>Chicken & Sweetcorn Pie with Herby New Potatoes</p> <p>Japanese Style Curry with Rice</p> <p>Thyme Roasted Carrots / Savory Cabbage</p> <p>Jelly with Fresh Fruit Slices</p>	<p>Breaded Fish with Chips & Tomato Sauce</p> <p>Butternut Squash Fritata with Chips & Tomato Sauce</p> <p>Peas / Baked Beans</p> <p>Pear & Chocolate Crumble with Custard</p>

Available daily: Freshly Baked Bread, Jacket Potato with a Choice of Fillings, Salad Selection, Fresh Fruit, Yogurt

Look out for monthly featured ingredients

- LOST PROPERTY:** As you can see from the picture, the lost property box is overflowing! Can you please take time to claim any items. Whatever is remaining on the last day of term will be donated to the WPCA Clothes Bin!



- HAYFEVER MEDICATION:** If your child suffers with hay fever, and requires medication, then please supply this to the school office along with the completed 'Consent to Administer Medication Form'. The one-a-day tablets taken first thing in the morning are particularly useful in a school day scenario!

We thank you in advance for your understanding that the medication we hold in school is for EMERGENCY use only.

[CONSENT TO ADMINISTER MEDICATION FORM](#)

IMPORTANT IMPORTANT IMPORTANT:

LAST DAY OF TERM LEAVING EARLY PERMISSIONS: Those of you who have children in years 3-6 who ordinarily have permission to leave the classroom on their own, **will need a separate parental consent for the last day of term, Friday 18th July**, as we finish at the earlier time of 1:00pm.

A consent for this last day has been added to Arbor.

Please ensure you have completed this, or your child will not be able to leave the premises on their own.

Thank you for your continued cooperation.

- PARENT SURVEY RESULTS:** Thank you to all the parents, guardians and carers that took part in our annual Parent Survey. Your thoughts are invaluable to us, as the data collected will be used to support the forward planning of the school for the next academic year and beyond.

[VIEW THE RESULTS](#)

- ABSENCES CAN NOW BE LOGGED VIA THE ARBOR APP:** If your child is unwell and unable to attend school, you are now able to log same-day absences using the Arbor app.

To record an absence, click on the **Quick Actions** button (≡) at the bottom left hand corner in your app, and then click **Attendance**. From there, click the green **Log Absence** button.

Please ensure you provide a reason for the absence, including any symptoms your child is experiencing. Once the absence is logged in Arbor, school will approve or reject the absence. Approved absences will appear in the Attendance tab of your Arbor App. School will follow up all absences that are rejected.

For further information, please click on the link below:
[How to report an absence in Arbor](#)

- TENNIS LESSONS—SEPTEMBER 2025:** Please find details of prices, dates, and how to book by clicking on the link below:



Matt Reid ProCoaching

- DOGS (PETS) ON SITE:** Please **refrain from bringing pets onto the school premises** whether carried or on a lead. For the safety of the school community, pets are not permitted on the school grounds.

A dose of Health & Wellbeing

A bitesize guide to a healthier lifestyle, from your School Nursing team

[**Click here**](#)

Primary School Edition (July 2025)

INTRODUCTION OF NEW ARBOR END-OF-YEAR REPORTS

As we approach the end of the academic year, we are pleased to introduce a new format for our end-of-year reports, which will now be delivered through Arbor (the school's management information system).

These updated reports are designed to give you a clear and comprehensive overview of your child's progress. Key features include:

A streamlined and easy-to-read format

Attendance information

A personalised teacher comment reflecting your child's achievements and efforts

Insights into your child's personal development, including their attitude to learning and contribution to school life

Children's reports will be emailed to parents on Thursday, 17th July 2025, and will be available via your Arbor Parent Portal account. If you have not yet activated your account or need help accessing it, please contact the school office and we will be happy to assist.

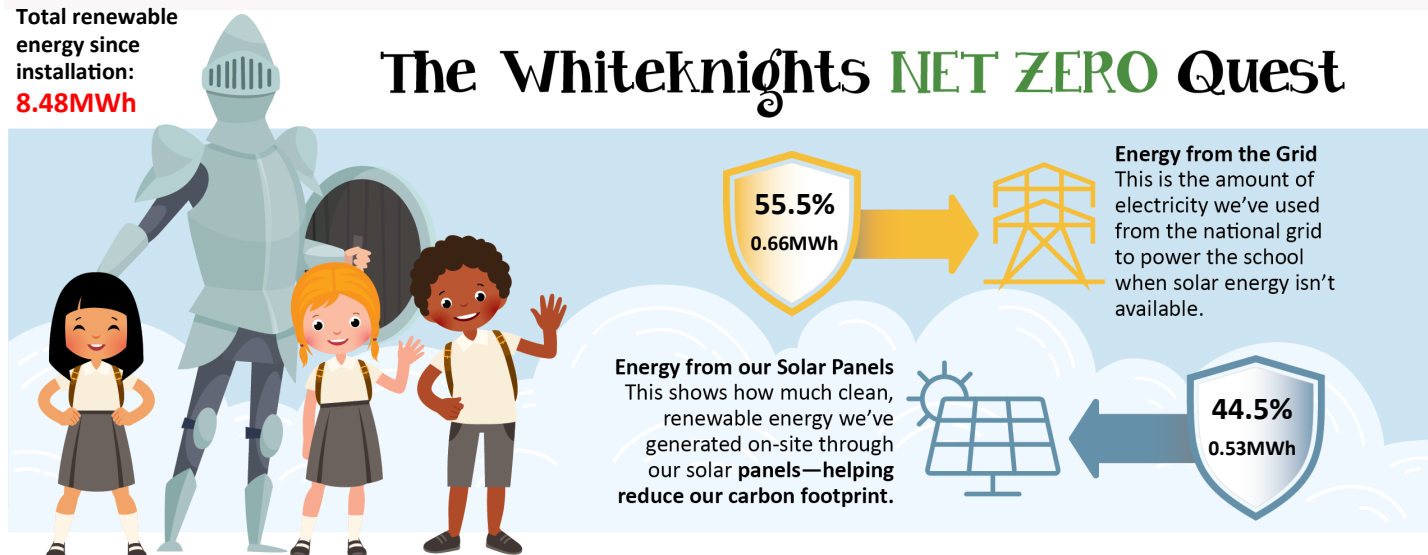
We believe this new format will strengthen the connection between school and home, and we welcome feedback once you have had a chance to review your child's report.

Whiteknights Primary School Report Card: End of Academic Year 2024-2025



Total renewable
energy since
installation:
8.48MWh

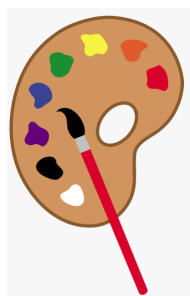
The Whiteknights **NET ZERO** Quest



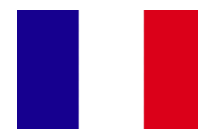
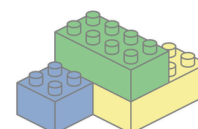
Week of: 04/07/2025 to 10/07/2025

WHOLE-SCHOOL NOTICES (Cont.)

- EXTRA CURRICULAR CLUBS STARTING SEPTEMBER 2025:** Please see a complete list of extra curricular clubs and activities starting in September 2025. Further details (price, dates and booking links) will be made available in next weeks newsletter!



Activity	Day	Year group
Choir	Monday	Yrs 3 - 6
Eco Club	Monday	Yrs 1 - 6
11 + Club	Monday	Yrs 4- 5
Hamma Beads Club	Monday	Yrs 1 - 3
Little Historians	Monday	Yrs 1 - 3
French Club	Monday	Yrs 3 - 6
Outdoor adventures	Monday	R - Y2
Activity	Day	Year group
Lego Masters	Tuesday	Yrs 2 - 4
Debate Club	Tuesday	Yrs 4- 6
Chess	Tuesday	Yrs 3 - 6
Netball Stingers Club	Tuesday	Yrs 3 - 6
Creative Club	Tuesday	Yr 1
Football	Tuesday	R - Y2
French Club	Tuesday	Yrs 1 -2



Activity	Day	Year group
Drama	Wednesday	R- Yr 2
Basketball	Wednesday	Y3 - Y6
STEMbotics	Wednesday	Yrs 1 -2
Girls Football Club	Wednesday	Yrs 3 - Y6
Arts & Crafts	Wednesday	Yr 2 - 6



Activity	Day	Year group
Arts & Crafts	Thursday	Yrs 2 - 6
Tennis	Thursday	Yrs 1 - 2
Football	Thursday	Y3 - Y6

Activity	Day	Year group
Drama	Friday	Yrs 3 - 6
Multi Skills	Friday	R - Yr 2
Tag Rugby	Friday	Y3- Y4



WHOLE-SCHOOL NOTICES (Cont.)

Order Your School Uniform Online

BRIGADE

Parents Direct Delivery



SUPPLYING SCHOOLS Since 1990

IMPORTANT SUMMER HOLIDAY ORDER INFORMATION

Place your order before **18th July** for delivery before the start of term

www.brigade.uk.com

Register today to avoid missing out on Brigade promotions or important notifications by scanning this QR code



HOW TO MEASURE YOUR CHILD

Measure the actual body measurements as this is far more accurate than measuring over clothes.

CHEST: Measure around the chest at the fullest part, placing tape close up under the arms.

COLLAR: Measure around the base of the neck where the collar sits, inserting two fingers between the neck and tape to allow growth.

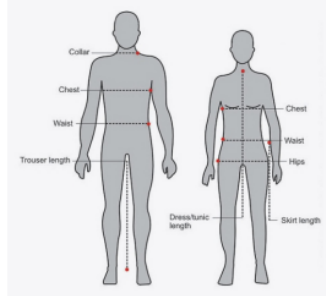
WAIST: Measure around the natural waistline.

TROUSER LENGTH: Measure the inside leg from crotch to floor without shoes on.

HIPS: Measure around the hips, 20cm (8") below the natural waistline.

SKIRT LENGTH: Measure from the waist down to where you would want the hem.

DRESS & PINAFORE LENGTH: Measure from nape of neck to length required.



HOW TO USE THIS SERVICE

INSTRUCTIONS

1. Log onto www.brigade.uk.com
2. Click on the 'parents click to order' button
3. Enter your child's school name
4. Select the school from the drop down list provided
5. Follow the online instructions to place your order

£4.49 delivery fee applied for all orders

IMPORTANT INFORMATION ON SUMMER HOLIDAY ORDERS

July to September is a busy time for ALL uniform providers!

Place your order **BEFORE 18th July** for delivery before the start of term.

We cannot guarantee orders placed after this date will be delivered in time for the start of the new term.

ORDER SATURDAY OR SUNDAY FOR FASTER DELIVERY!

PRIMARY UNIFORM - SIZE COMPARISONS

Brigade Sweatshirts and Sweatshirt Cardigans/Polo Shirts/T-Shirts

Chest	22"	24"	26"	28"	30"	30/32"	32"	34"
Age	1-2	3-4	5-6	7-8	9-10	9-11	11-12	13-14

Knitwear Jumpers (Acrylic, 50/50 and Contrast Stripe)

Chest	22"	24"	26"	28"	30"	32"	34"	36"
Age	1-2	3-4	5-6	7-8	9-10	11-12	13-14	15-16

Blazers

Chest	22"	24"	26"	28"	30"	32"
Age	1-2	3-4	5-6	7-8	9-10	11-12

PE Shorts

Waist	14/16"	18/20"	22/24"	26/28"	28/30"	30/32"
Age	2-4	5-7	8-10	11-13	XS	S

PLEASE NOTE:

The sizing guide is a guide for our standard products only and measurements may vary within the British Standard textiles tolerance of +/- 5%. Substitutions may also be provided with a different sizing structure matched to our standard sizes

SENIOR UNIFORM - SIZE COMPARISONS

Blazers

Chest	28"	30"	32"	34"	36"	38"	40"	42"	44"	46"	48"	50"
Age	7-8	9-10	11-12	13-14	15-16							
Female	6	8	10	12	14	16	18	20	22	24	26	28
Male				XS	S	M	L	XL	2XL	3XL	4XL	5XL

Knitwear Jumpers (Acrylic, 50/50 and Contrast Stripe)

Chest	28"	30"	32"	34"	36"	38"	40"	42"	44"	46"
Male	7-8	9-10	11-12	13-14	S	M	L	XL	2XL	3XL
Female	6	8	10	12	14	16	18	20	22	24

Brigade Sweatshirts and Sweatshirt Cardigans/Polo Shirts/T-Shirts

Chest	28"	30"	30/32"	32"	34"	36"	38/40"	42/44"	46/48"
Age/Size	7-8	9-10	9-11	11-12	13-14	S	M	L	XL

PE Shorts

Waist/Size	22/24"	26/28"	28/30"	30/32"	34/36"	38/40"
	54cm	56cm	58cm	60cm	66cm	76cm
Leg Length	33cm	37cm	40cm	42cm	46cm	48cm

TIES (For Primary and Senior Schools)

Tie Style/Size	Elastic	9"	Clip on	12"	14"	16"	Tie	39"	45"	52"
School Age		Inf/Jnr		Junior	Junior	Senior		Junior	Jun/Sen	Senior

IMPORTANT WASH CARE INSTRUCTIONS



Always refer to your garment care label to ensure that your uniform looks as good as new for as long as possible. We produce tough, hardwearing uniform, however it is important that you follow the care labels correctly to ensure you get the best out of your purchase.

- Turn garments inside out to wash and dry
- Fasten any buttons before washing
- Do not overload machine
- Iron inside out on a cool setting to avoid heat damage, which can cause a shiny surface on fabrics (do not iron knitwear or cuffs and welts on sweatshirts)
- Bobbling/Pilling is caused by friction and excessive heat. It is also known within the British textile industry that fabric softeners are a major cause of bobbling/pilling of the fabric. Bobbling/pilling often disappears over time and is not a reflection on the quality of the garment.

Washing symbols and their meaning

Always check the label!!



Machine wash at temperature stated



Hand wash only



Do not bleach



Tumble dry at temperature stated



Do not tumble dry



Dry clean only



Iron at temperature stated



Do not iron



Do not wring out

Online chat:

Try our AI driven online chat for quick answers to most queries!



Scan the QR code to begin

How to order:

View our ordering guide for full details of how to place an order.



Scan the QR code to begin

Contact us:

With responses within 24hrs, please use this option if you can't find an answer elsewhere.



Scan the QR code to begin

GROUP-SPECIFIC NOTICES

NURSERY : Notices and Reminders

- [NURSERY TERMLY LETTER](#)
- [NURSERY TERMLY OVERVIEW](#)
- [KNOWLEDGE ORGANISER](#)

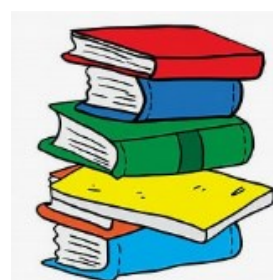
RECEPTION : Notices and Reminders

- [RECEPTION TERMLY LETTER](#)
- [RECEPTION TERMLY OVERVIEW](#)
- [RECEPTION KNOWLEDGE ORGANISER](#)

This week _____ Crystal _____ class will be attending the school library.

Monday	Wednesday	Thursday	Friday
Blue house (Bedevere)	Yellow house (Galahad)	Red house (Lancelot)	Green house (Melion)

Please can your child bring their library book back to school on the day their house is due to visit the library. Then, they can return their book and take out a new one.



YEAR 1 and YEAR 2 : Notices and Reminders

- [YEAR 1 TERMLY LETTER](#)
- [YEAR 1 TERMLY OVERVIEW](#)
- YEAR 1 MATHS HOMEWORK SCHEDULE:
- [YEAR 2 TERMLY LETTER](#)
- [YEAR 2 TERMLY OVERVIEW](#)
- YEAR 2 MATHS HOMEOWRK SCHEDULE:

Homework due date	Pages to complete
10 th June	93 - 99
17 th June	100 - 107
24 th June	108 - 113
1 st July	115 - 117
8 th July	119 - 121
15 th July	122 - 128

Homework due date	Pages to complete
9 th June	100 - 102
16 th June	103 - 105
23 rd June	107 - 109 (106 is a helpful page).
30 th June	110 - 112
7 th July	114 - 116 (113 is a helpful page).
14 th July	117 - 119

GROUP-SPECIFIC NOTICES

YEAR 1 and YEAR 2 : Notices and Reminders (Cont.)

- YEAR 2 ROYAL AFTERNOON:



Year 2: Royal afternoon!

This half term, we are learning about Kings and Queens. On the **afternoon of Wednesday 16th July**, all Year 2 pupils will be having a Royal themed afternoon with activities, dress-up and even a royal afternoon tea!

We invite all children to bring in a change of clothing – fit to be a prince or princess for the afternoon! 😊

~ Mr Lane and Mrs Brown

YEAR 3 and YEAR 4 : Notices and Reminders

- [YEAR 3 TERMLY LETTER](#)
- [YEAR 3 TERMLY OVERVIEW](#)
- [YEAR 4 TERMLY LETTER](#)
- [YEAR 4 TERMLY OVERVIEW](#)



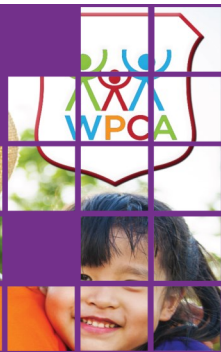
- **YEAR 3 EGYPTIAN DAY:** Egyptian day will take place on Wednesday, 16th July. It will involve a variety of activities (inside and out) and will relate to our topic learning. Children can wear any Egyptian themed clothing e.g. Egyptian God, an Egyptian character, a mummy or gladiator, to name but a few ideas!

YEAR 5 and YEAR 6 : Notices and Reminders

- [YEAR 5 TERMLY LETTER](#)
- [YEAR 5 TERMLY OVERVIEW](#)
- [YEAR 6 TERMLY LETTER](#)
- [YEAR 6 TERMLY OVERVIEW](#)
- **YEAR 6 LEAVERS COLOUR RUN:**
Please see poster on the last page of the newsletter for further information!



WHITEKNIGHTS PARENT COMMUNITY ASSOCIATION NOTICE BOARD



HAPPY'S CIRCUS IS COMING BACK TO WHITEKNIGHTS PRIMARY!



Kids under 2yoa – free entrance
(to sit on parent's lap)

FAMILY EVENT – KIDS TO BE ACCOMPANIED BY AN ADULT

Doors opens at 5pm show starts at 5.30pm

Food on sale and stalls to enjoy
Tickets to be booked in advance –
scan the QR or visit:

www.pta-events.co.uk/wPCA/

***ticket prices after 19th July: £13**

***EARLY BIRD
SPECIAL**
**£11/
ticket**
LIMITED QUANTITIES





BEAUTY AND THE BEAST



SAVE THE DATE_07_12_2025

ADMITTS_1

BEAUTY & THE BEAST PANTO

7 DECEMBER, 5^{PM} AT THE
HEXAGON, READING

TICKETS ON SALE THROUGH PTA EVENTS PAGE
£28.50 PER TICKET, INCLUDING BOOKING FEE



Join us for an unforgettable afternoon of colour, fun, and celebration!
Let's make your final days at primary school the most colourful yet!

YEAR 6 LEAVERS COLOUR RUN!

£7

+ booking fee
Via PTA events

<https://www.pta-events.co.uk/wpca/?event=event&eventId=101298>

To included
Colour powder
Leavers 25 Tee
Sunglasses
Photo opportunities
Balloon arch
to finish a visit from the ice cream man



Date: 17.07.25



Time: Afternoon in school time



Location: School Field

Hosted and part funded by WPCA

