

# WHITEKNIGHTS ARROW



Date 24th May 2024

No.: Issue #32

## WHAT'S ON THE FIRST WEEK AFTER HALF TERM

MONDAY 03 JUNE	TUESDAY 04 JUNE	WEDNESDAY 05 JUNE	THURSDAY 06 JUNE	FRIDAY 07 JUNE
Staff and pupils return to school	Tigers Eye class trip to Lower Earley Library		Year 5 Trip to Hengistbury Head	Ruby class trip to Lower Earley Library
	School Tour for new nursery parents 10:00			

KEY:

WHOLE SCHOOL

YEAR GROUP SPECIFIC

OTHER

+ONLINE SCHOOL CALENDAR AND EXTRA CURRICULAR TIMETABLE

## SCHOOL ATTENDANCE

OVERALL TOTAL: 95.28%



REC—Crystal	91.67%	Y4—Amethyst	98.33%
REC—Pearl	89.00%	Y4—Jasper	97.33%
Y1—Amber	91.33%	Y5—Emerald	97.33%
Y1—Jade	99.00%	Y5—Onyx	XX%
Y2—Opal	95.67%	Y5—Sapphire	93.87%
Y2—Topaz	95.33%	Y6—Obsidian	XX%
Y3—Diamond	98.00%	Y6—Ruby	93.67%
Y3—Garnet	98.00%	Y6—Tiger's Eye	93.33%

ATTENDANCE MATTERS!

Every Child | In School | On Time | Every Day

# DATES FOR THE DIARY

## Summer Term

Tuesday, 4th June	School Tour for new nursery parents 10:00
Tuesday, 4th June	Tigers Eye class visit to Lower Earley Library
Thursday, 7th June	Year 5 Trip to Hengistbury Head
Friday, 7th June	Ruby Class visit to Lower Earley Library
Monday, 10th June	Pearl Class visit to lower Earley Library
Tuesday, 11th June	Parent meetings of new reception children. In the school hall 10:00-11:00
Wednesday, 12th June	Parent meetings of new nursery children. In the school hall 10:00-11:00
Thursday, 13th June	Year 4 Amethyst Class Library visit
Friday, 14th June	Year 4 Jasper Class Library visit
Monday, 17th June	Year 6 Bikeability Week
Tuesday, 18th June	Bags 2 School Collection
Wednesday, 19th June	Reception trip to Wellington Country Park (within school hours)
Monday, 24th June	New Reception children SPLAT Session 1 (come to one or the other) 13:30-14:30
Wednesday, 26th June	New Reception children SPLAT Session 2 (come to one or the other) 13:30-14:30
Wednesday, 26th June	Year 1 trip to Butterfly World
Thursday, 27th June	New Nursery children SPLAT 13:30-14:30
Monday, 1st July	INSET Day—school closed to pupils
Tuesday, 2nd July	Year 4 SPLAT
Tuesday, 2nd July	New parent 1:1 meetings of children joining Pearl Class 08:00-16:00
Wednesday, 3rd July	New parent 1:1 meetings of children joining Crystal Class 08:00-16:00
Thursday, 4th July	New parents of children joining Little Gems 1:1 meetings 08:00-16:00
Monday, 8th July	New parents of children joining Little Gems 1:1 Meetings AM only
Friday, 12th July	Year 2 trip to Windsor Castle
Tuesday, 16th July	Year 6 Performance to parents
Wednesday, 17th July	Year 6 Performance to Parents
Thursday, 18th July	Year 6 Leavers Banquet
Friday, 19th July	End of term—school closes at 13:00 prompt

- RECEPTION WELLINGTON COUNTRY PARK TRIP:** We are looking for volunteers to help out on this trip. If you can assist, then please talk to your child's class teacher in the first instance.



# WHOLE-SCHOOL NOTICES

- BPET ANNUAL PARENT SURVEY:**

Dear Parent/Carer,

We would like to invite you to complete the annual Bellevue Place Education Trust parent questionnaire to share your view on various aspects of our school.

This is an important part of the school's planning process as your feedback feeds into the School Development Plan along with the strategic planning of our trust.

The survey can be accessed at the following link:

[https://www.surveymonkey.com/r/WKS\\_APS\\_2024](https://www.surveymonkey.com/r/WKS_APS_2024)

Please complete it by **Friday 24 May at 5pm** to ensure that your views are taken into account. It should take no longer than 7-10 minutes to complete.

Thank you in advance for taking part.

- EXTRA CURRICULAR CLUBS—SUMMER 2 :** in preparation for next half term—please find below the club details and booking information for some of our externally run extra curricular clubs.

[ARTIKIDS—Y1-Y2](#)

[MINECRAFT Y3-Y6](#)

[ARTIKIDS—Y3-Y4](#)

[KIDS WITH BRICKS Y2-Y3](#)

- SMART DEVICES AT SCHOOL:** Please note that as with mobile phones, all smart devices, with similar technology to mobile phones, will now need to be handed to the class teacher at the start of the school day and will not be accessed again until the end of the day. Our children are growing up in an increasingly complex world, living their lives on and offline. This presents many exciting opportunities – but also challenges. Schools must create safe and calm environments free from distraction so all pupils can receive the education they deserve.

Thank you for your cooperation on this matter.

Order by Friday 14<sup>th</sup> June – FOR DELIVERY BEFORE THE END OF TERM

Order by Friday 12<sup>th</sup> July – FOR DELIVERY FIRST WEEK OF SEPTEMBER

ONLINE ORDERING: [www.brigade.uk.com](http://www.brigade.uk.com) then select the PARENTS CLICK TO ORDER HERE link  
 PARENT ENQUIRIES EMAIL: [sales@brigade.uk.com](mailto:sales@brigade.uk.com) or click [HERE](#)  
[www.brigade.uk.com/contact-us/](http://www.brigade.uk.com/contact-us/)



- SCHOOL LUNCHES:** From September 2024, school lunches will increase to £2.65.



Please be aware that you can book your child's school lunch up **until midnight the day before**.

# WHOLE-SCHOOL NOTICES *cont.*

HARRISON
food with thought

What's on the menu?
Monday 3rd June — Friday 7th June
Remember—Meat Free Monday!

	MONDAY	TUESDAY	WEDNESDAY	THURSDAY	FRIDAY
<b>W/C</b> <b>3rd June</b>	Cheesy Tomato & Basil Pasta with Salad Selection Indian Style Biryani with Tomato, Cucumber & Mint Salad Sweetcorn & Green Beans Orange & Lemon Sponge Cake with Custard	Creole Style Chicken with Vegetable Rice Chickpea & Vegetable Chow Mein Style Noodles Garlic Greens & Carrots Strawberry Jelly with Watermelon Slice	Chicken Sausages with Potato Wedges & Coleslaw Vegetarian Sausages with Potato Wedges & Coleslaw Baked Beans/Broccoli Lemon Shortbread with Fresh Fruit Wedges	Chicken & Sweetcorn Pie with New Potatoes Tuscan Style Tomato & Bean Pasta Roast Courgettes/Carrots Chocolate Marble Cake & Chocolate Sauce	Battered Fish Fillet with Tomato Sauce & Chips Chickpea & Herb Pattie in a Tortilla with Sweet Chilli Sauce & Chips Peas/Baked Beans Vanilla Ice Cream with Sliced Fruit
<b>WEEK TWO</b> 20 <sup>th</sup> Feb, 18 <sup>th</sup> Mar, 8 <sup>th</sup> & 20 <sup>th</sup> Apr, 20 <sup>th</sup> May, 10 <sup>th</sup> Jun, 1 <sup>st</sup> July	Macaroni Cheese Vegetable & Bean Stir Fry with Sweetcorn Rice Peas/Butternut Squash Berry Swirl Sponge Cake & Custard	Beef Lasagne Lentil & Mixed Pepper Lasagne Broccoli/Sweetcorn Strawberry Ice Cream & Fruit Wedges	Roast Turkey with Roast New Potatoes & Gravy Cheese & Chive Quiche with Roast New Potatoes Carrots/Green Beans Chocolate Sponge Cake & Chocolate Sauce	Minced Beef Keema with Pilau Rice Italian Style Tomato & Herb Sauce with Penne Pasta Cabbage/Sweetcorn Apple Crumble with Custard	Battered Fish Fillet with Tomato Sauce & Chips Sweet Potato, Spinach & Bean Pasty with Chips & Tomato Sauce Peas/Baked Beans Jelly & Fresh Fruit
<b>WEEK THREE</b> 4 <sup>th</sup> & 25 <sup>th</sup> Mar, 15 <sup>th</sup> Apr, 6 <sup>th</sup> & 27 <sup>th</sup> May, 17 <sup>th</sup> Jun, 6 <sup>th</sup> Jul	Pizza Margherita with Baked Potato Wedges Pesto Style Pasta with Mediterranean Salad & Cheese Sweetcorn with Mixed Peppers/Broccoli Vanilla Ice Cream with Fresh Fruit Wedges	Cheesy Beef & Macaroni Bake Chilli Bean Wrap with Salsa & Mexican Rice Carrots/Green Beans Carrot Cake & Custard	Cottage Pie with Gravy Chickpea & Vegetable Korma & Rice Broccoli/Sweetcorn Fruit Jelly & Fruit Wedges	Beef Burger in a Bun with Potato Wedges Sweet Potato & Pepper Pattie in a Bun with Potato Wedges Sweetcorn/Coleslaw Apple Sponge Cake & Custard	Breaded Fish Fillet with Tomato Sauce & Chips Cheese & Mixed Pepper Quiche with Chips Peas/Baked Beans Chocolate Shortbread

Available daily: Freshly Baked Bread, Jacket Potato with a Choice of Fillings, Salad Selection, Fresh Fruit, Yoghurt

From September 2024, school lunches will increase to  
£2.65

- FREE SCHOOL MEALS:**

Did you know registering for free school meals helps get extra funds for school?

This helps to provide extra tuition, additional teaching staff or after school activities. This additional money is available from central government for every child, when their parents have registered for free school meals. And nationally more than 10 per cent who are eligible, don't claim.

To qualify, your child must be in school and you must be receiving one of the following benefits:

[Income support](#)

Income based [Job Seekers Allowance](#)

Income related [Employment and Support Allowance](#) [NASS support](#)

Guarantee element of [State Pension](#) more than £16,190

[Working Tax Credit](#) for the four weeks after employment ends



**Are you entitled?**

# GROUP-SPECIFIC NOTICES

## NURSERY : Notices and Reminders

- [Knowledge Organiser](#)

## RECEPTION : Notices and Reminders

- No notices this week.

## YEAR 1 and YEAR 2 : Notices and Reminders

- Year 1 Maths Homework Schedule:




Homework due date	Pages
22 <sup>nd</sup> April	Pages 87 – 89
29 <sup>th</sup> April	Pages 90 – 92
7 <sup>th</sup> May (Tuesday due to Bank Holiday)	Pages 93 – 95
13 <sup>th</sup> May	Pages 96 – 99
20 <sup>th</sup> May	Pages 100 -102
3 <sup>rd</sup> June (After half term)	Pages 103 – 110

## YEAR 3 and YEAR 4 : Notices

- **GARNET CLASS SWIMMING:** Just a reminder that swimming lessons will begin after half term. Garnet Class will be swimming weekly from Thursday 6<sup>th</sup> June 2024 – Thursday 27<sup>th</sup> June 2024 – 4 lessons. For their swimming lesson, each week your child will need to bring with them:

Swimming costume (girls require a one-piece swimming costume)  
Swimming cap  
Swimming goggles (optional)  
Towel

- **HOME LEARNING:** Reminder about homework due in 14th June 2024. Click on picture for further information.

Choose one activity from the grid. Bring into school by Friday 14 <sup>th</sup> June.		
You are welcome to choose more than one activity to complete!		
<b>Expressive Arts</b> <ul style="list-style-type: none"><li>• Create a painting or drawing of an ancient Egyptian scene using your choice of materials.</li><li>• Ask your friends and family to help you create a list with as many song titles that have the word "have" in it.</li><li>• Write an ancient Egyptian rap or song.</li><li>• Design a piece of Egyptian jewellery.</li></ul>	<b>Out and About!</b> <ul style="list-style-type: none"><li>• Visit your local library and find some non-fiction books about ancient Egypt.</li><li>• Research and find interesting landmarks in Egypt on a map.</li><li>• Go to a travel agent's or research holidays to Egypt online. Design a leaflet to encourage tourism to the country.</li></ul>	<b>Literacy</b> <ul style="list-style-type: none"><li>• Imagine you have been on a dig: write a diary entry about your adventures.</li><li>• Choose an ancient Egyptian god or goddess and create a fact file book or poster all about them.</li><li>• Write an ancient Egyptian themed poem or story.</li><li>• Using the words ancient Egypt, create an acrostic poem.</li></ul>
<b>Working with Others</b> <ul style="list-style-type: none"><li>• Find and write out some ancient Egyptian themed jokes and share them with friends or family members!</li><li>• Write your name and the names of 3 friends or family members in hieroglyphics.</li><li>• Create an Egyptian themed board or card game and teach friends or family members how to play.</li></ul> 	 Homework Choice Grid Ancient Egypt	<b>Maths</b> <ul style="list-style-type: none"><li>• Go to a travel agent's or research holidays to Egypt online. Budget how much it would cost to go on holiday with your family.</li><li>• Draw a map of a pharaoh's tomb. Write a set of instructions on how to safely get through, avoiding any traps! Think about using directional language.</li><li>• Make a net for a pyramid.</li></ul> 
<b>Let's Get Technical!</b> <ul style="list-style-type: none"><li>• Use a computer to create a timeline of events.</li><li>• Design and make a bomb or coffin for an Egyptian mummy.</li><li>• List 20 things you wouldn't find in ancient Egypt.</li></ul>	<b>Health and Wellbeing</b> <ul style="list-style-type: none"><li>• Find and make some ancient Egyptian recipes.</li><li>• Write a menu for an ancient Egyptian feast. Be as creative as you like.</li><li>• Research personal hygiene practices in ancient Egypt and compare to today's.</li></ul>	<b>Social Studies</b> <ul style="list-style-type: none"><li>• Write a fact file on a pharaoh.</li><li>• Write a newspaper article about the discovery of Tutankhamun's tomb.</li><li>• Design a fact file or poster about the River Nile.</li><li>• Draw or trace a map of Egypt and mark important landmarks.</li></ul>

## YEAR 5 and YEAR 6 : Notices and Reminders

- No notices this week.

# CELEBRATING WHITEKNIGHTS

Shining a spotlight on school life and pupil achievement

PSHE

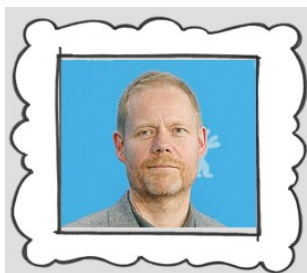
CONNECT

This half term we are working on challenging ourselves.

*"If you don't challenge yourself, you will never realise what you can become."*



## COMPOSER OF THE WEEK



Read about our [‘Composer of the Week’](#), Max Richter.

Max Richter is a British composer. Richter arranges, performs and composes music for the opera, ballet, screen and stage. So far he has recorded 8 solo albums. This piece relies heavily on piano and strings. As you listen, try to distinguish between the variety of stringed instruments.

## MINECRAFT BUILDER OF THE WEEK

All attendees at this club are winners this week!



We have had a wonderful term of creations.

Remember to book your space for next term!



[MINECRAFT Y3-Y6](#)

## LEARNER SHOW-

## CASE : SCHOOL LIFE

Discover the latest school news, including classroom highlights, sporting events, school trips and more, - click on the links below:-

- [BRINGING ‘ESIO TROT’ TO LIFE: YEAR 2 MEET REAL-LIFE TORTOISE](#)

## PUPIL SPOTLIGHT : CELEBRATING PUPIL ACHIEVEMENTS BEYOND SCHOOL

- [RISING STAR: YEAR 3 PUPIL SHINES AS BADMINTON PLAYER OF THE MONTH](#)

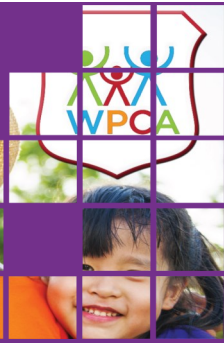
## USEFUL LINKS

[SCHOOL FORMS](#)

[SCHOOL MEALS](#)

[TERM DATES](#)

# WHITEKNIGHTS PARENT COMMUNITY ASSOCIATION NOTICE BOARD



- No notices this week.